

19" Optical Fiber Distribution Frame Ws02 Series(Fiber Panels)



WS02-D6



WS02-D6B

Main feature:

- ◆ Ideal for all 19 inch rackmount applications.
- ◆ Small dimensions and convenient operation.
- ◆ Multiple patterns and configuration.
- ◆ With adequate storage and distribution space.
- ◆ With safe and reliable fiber cable fastening.
- ◆ Applicable to adapters such as FC/SC/ST.

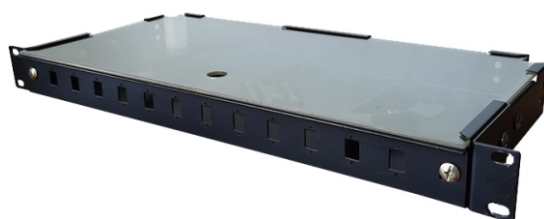
Material and Surface finish:

- ◆ SPCC cold rolled steel.
- ◆ Degreasing, pickling, phosphoric, powder coated.
- ◆ Color: Black(RAL9004) or Gray(RAL7035).

Model No.	Spec	Adapter port	Size
WS02-D1	Wall-Mount	12/24/SC	380x75x330mm
WS02-D3	1U/Rack-Mount	12/24/SC	465x45x200mm
WS02-D4	1U/Rack-Mount	12/24/SC	465x45x200mm
WS02-D5	1U/Rack-Mount	12/24/SC/FC	465x45x300mm
WS02-D6	1U/Rack-Mount	12/24/SC/FC	465x45x350mm
WS02-D6B	1U/Rack-Mount	12/24/SC	465x45x250mm



WS02-D3



WS02-D4



WS02-D5



WS02-D1